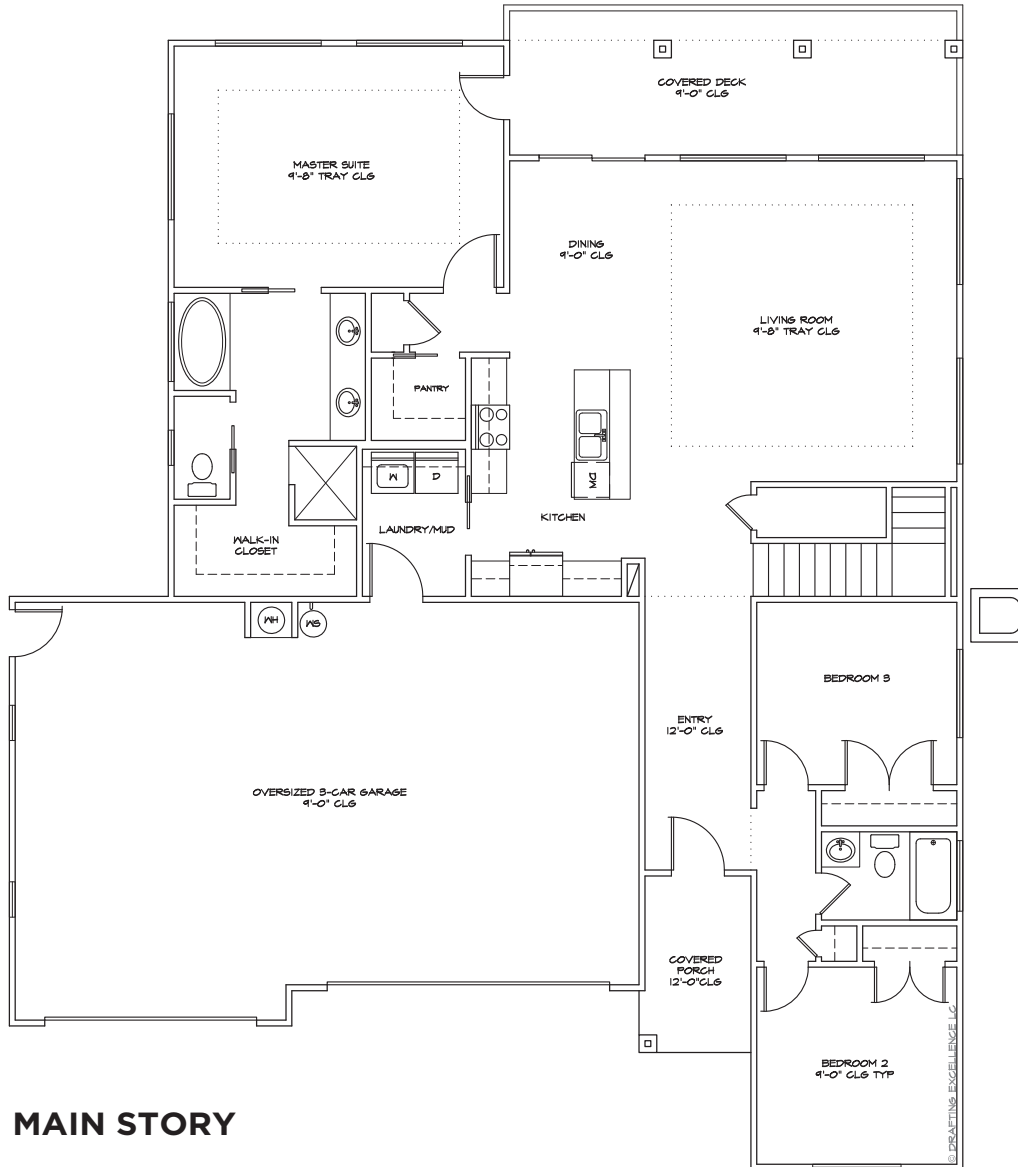




# KAYENTA

VIEWS ELEVATED



Square Footage:

# 3046

Bedrooms: **5**

Bathrooms: **3**

Garage: **2 Cars**

**INCLUDED UPGRADES**

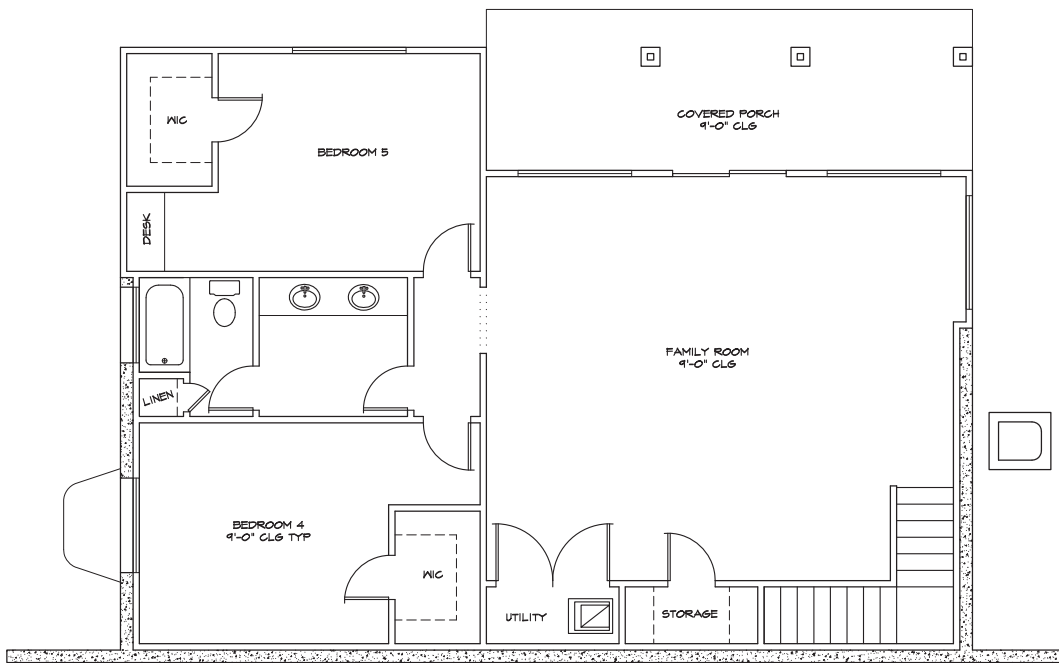
- ◆ SMART HOME UPGRADES
- ◆ 8 FOOT INTERIOR DOORS
- ◆ TWO-TONE PAINT
- ◆ STAINLESS STEEL APPLIANCE PACKAGE
- ◆ ENERGY EFFICIENT
- ◆ FRONT LANDSCAPING

Zion Vista Home reserves the right to modify or change the floor plans, home specifications, designs, features, options, prices or terms without notice or obligation. Home square footages are approximates and are subject to change.



# KAYENTA

IEWS ELEVATED



**BASEMENT**

Square Footage:  
**3046**

Bedrooms: **3**  
Bathrooms: **2**  
Garage: **2 Cars**

**INCLUDED UPGRADES**

- ◆ SMART HOME UPGRADES
- ◆ 8 FOOT INTERIOR DOORS
- ◆ TWO-TONE PAINT
- ◆ STAINLESS STEEL APPLIANCE PACKAGE
- ◆ ENERGY EFFICIENT
- ◆ FRONT LANDSCAPING

Zion Vista Home reserves the right to modify or change the floor plans, home specifications, designs, features, options, prices or terms without notice or obligation. Home square footages are approximates and are subject to change.